

Washer extractor

W5330N

Features and benefits

- **Compass Pro[®] microprocessor offers:**
 - Large display and one control knob for easy program selection
 - Language selection
 - Quick selection and option buttons for the most frequently used wash programs and options
- Extremely low water and energy consumption – see table below
- Four compartment detergent box for manual dosing of powder or liquid detergent
- High extraction force for efficient dewatering
- Door with gasket and strong hinges built for heavy duty operation
- Stainless and galvanized steel in all vital parts for high degree of rust protection
- SuperBalance guarantees the correct extraction force

Main options

- Automatic liquid detergent supply (optional I/O board)
- Connection to booking- /payment- system or coin meter

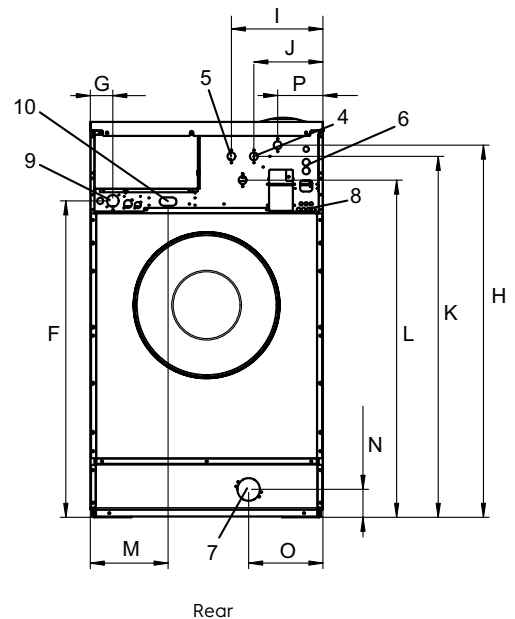
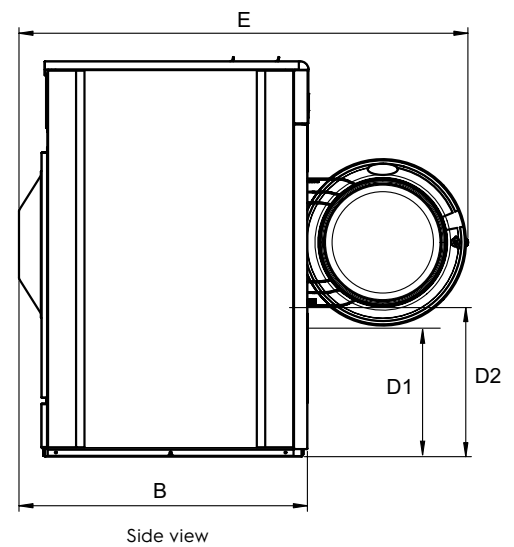
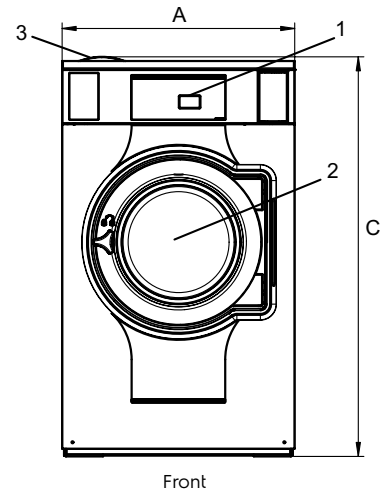


Images shown are a representation of the product only and variations may occur.

Main specifications				W5330N			
Max. capacity	filling factor 1:9	kg/lb		35/75			
Drum,	volume	litre/ft ³		330/11.7			
	diameter	ø mm/inch		795 / 31 5/16			
Extraction		rpm		474			
G-factor				100			
Standard heating alternatives		electricity	kW	19.1 / 19.8 / 23.0			
		steam		X			
		non-heated		X			
Consumption data 6S03				EI		Steam**	
"Warm" *				Full load, 35 kg / 75 lb	Half load, 17.5 kg / 37.5 lb	Full load, 35 kg / 75 lb	Half load, 17.5 kg / 37.5 lb
Total time		min		35	34.5	35	34.5
Water consumption (cold+hot)		litre/gallon		509/135 + 41/11	448/118 + 31/8	550/146 + 0/0	479/126 + 0/0
Energy consumption (motor/heating/hot water)		kWh		0.35/2.5/2.7	0.2/1.2/2.0	0.35/-	0.2/-
Steam consumption		kg/lbs		-	-	7.8/17.2	3.3/7.3
Residual moisture		%		77	84	77	84
* Water temperature 59°F cold water and 149°F hot water.							
** Depending on steam pressure.							

Electrical connections					
Heating alternative	Main voltage		Heating power kW	Total power kW	Recommended ITCB A
		Hz			
Electric heated	208-240V 3 -	60	19.8/23.0	21.0/24.2	70/80
	440V 3 -	60	21.0/22.8	22.2/24.0	40/50
	480V 3 -	60	22.8/23.0	24.0/24.2	40
Steam or Non heated	120/440/480V -	60	-	1.3	15
	208-240V -	60	-	1.2	15

Water and steam connection		W5330N
Water valves	DN/inch	20 / 3/4
Water pressure	psi	30-90
Capacity at 300 kPa	l/min	60
Drain valve	ø mm/inch	75 / 3
Draining capacity	l/min	170
Steam valve	DN/inch	15 / 1/2
Steam pressure	psi	7-40
Liquid detergent supplies		5
Floor requirements		
Frequency of the dynamic force	Hz	7.9
Floor load at max extraction	kN	4.6 ± 5.6
Sound levels		
Sound power/pressure level at extraction*	dB(A)	72/57
Sound power/pressure level at wash*	dB(A)	67/51
Heat emission		
% of installed power, max		5
Shipping data**		
Weight	net, kg/lbs	307 / 677
Shipping volume	m ³ /ft ³	1.86 / 66
Accessories		
Steel base		x
Hose kits for water or steam		x
Fluff collector		x
Dimensions in mm/inch		
A	Width	910 / 35 13/16
B	Depth	1114 / 43 7/8
C	Height	1465 / 57 11/16
D1		504 / 19 13/16
D2		568 / 22 3/8
E		1686 / 66 3/8
F		1168 / 46
G		80 / 3 1/8
H		1367 / 53 13/16
I		347 / 13 11/16
J		247 / 9 3/4
K		1327 / 52 1/4
L		1247 / 49 1/8
M		278 / 10 15/16
N		104 / 4 1/8
O		209 / 8 1/4
P		162 / 6 3/8
1	Operating panel	6 Re-used water
2	Door opening ø 435 mm / 17 1/8 inch	7 Drain
3	Detergent box	8 Liquid detergent supply
4	Cold water	9 Electrical connection
5	Hot water	10 Steam connection



Front and side panels in light grey and blue (RAL 260 70 05, 250 60 30)

* Sound power levels measured according to ISO 60704.

** Average data. Crated weight/shipping volume depends on configuration. Please contact logistics for exact measures.