

Washer extractor

W5350X

Features and benefits

- **Compass Pro[®] microprocessor offers:**
 - Large display and one control knob for easy program selection
 - Language selection
 - Quick selection and option buttons for the most frequently used wash programs and options
- **AWS – Automatic Savings:**
 - The machine weighs the linen and adjusts the amount of water and energy according to the load. This leads to considerable savings in case the machine is not fully loaded. (Available on general programs)
- Extremely low water and energy consumption – see table below
- Four compartment detergent box for manual dosing of powder or liquid detergent
- High extraction force for efficient dewatering
- Door with gasket and strong hinges built for heavy duty operation
- Stainless and galvanized steel in all vital parts for high degree of rust protection



Images shown are a representation of the product only and variations may occur.

Main options

- Stainless steel side panels
- Coin-meter

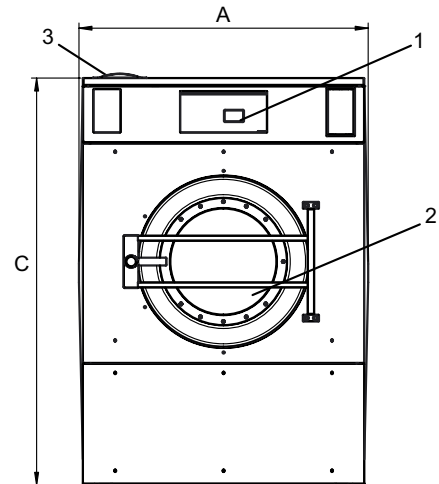
Main specifications				W5350X	
Max. capacity filling factor 1:10		kg/lb		35/77	
Drum, volume		litre/ft ³		350/12.4	
	diameter	ø mm/inch		920 / 36 1/4	
Extraction		rpm		650	
G-factor				220	
Heating alternatives, 230/400V	electricity	kW		24	
	steam			x	
	non-heated			x	
Consumption data 6S03/6L33				Full load, 35 kg / 77 lb	
"Warm" *				Half load, 17.5 kg / 33.5 lb**	
Total time		min		30	28
Water consumption (cold+hot)		litre/gallon		308/81.4+31/8.2	179/47.3+16/4.2
Energy consumption (motor/heating/hot water)		kWh		0.40/2.55/2.0	0.40/1.6/1.0
Steam consumption		kg/lbs		6.8/15.0	3.9/8.6
Residual moisture		%		62	68
* Water temperature 59°F cold water and 149°F hot water.					
** Programs with AWS.					

Electrical connections					
Heating alternative	Main voltage		Heating power kW	Total power kW	Recommended ITCB A
		Hz			
Electric heated	208-240V 3 -	60	18.0-24.0	19.2-25.2	80
	440/480V 3 -	60			
Non heated or steam heated	208-480V 1/3 -	60	-	1.8	15

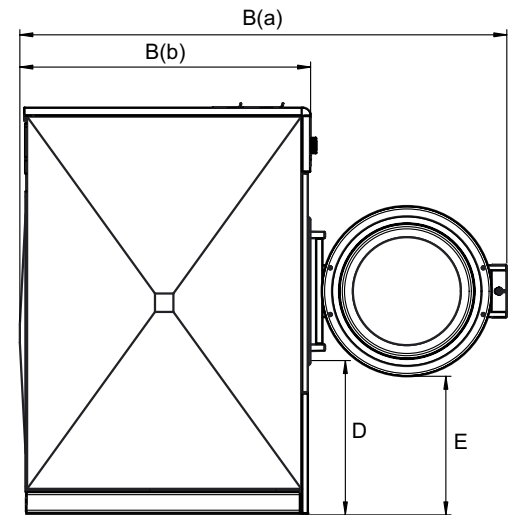
Water and steam connection		W5350X
Water valves	DN/inch	20 / 3/4
Water pressure	psi	30-90
Capacity at 300 kPa	l/min	60
Drain valve	ø mm/inch	75 / 3
Steam valve	DN/inch	15 / 1/2
Steam pressure	psi	7-40
Floor requirements		
Frequency of the dynamic force	Hz	10.8
Floor load at max extraction	kN	6.9 ± 10.7
Sound levels		
Sound power/pressure level at extraction*	dB(A)	80/64
Sound power/pressure level at wash*	dB(A)	64/48
Heat emission		
% of installed power, max		5
Shipping data**		
Weight	net, kg/lbs	560 / 1235
Shipping volume	m ³ /ft ³	2.7 / 291
Dimensions in mm/inch		
A	Width	1115 / 43 7/8
B(a)	Depth	1877 / 73 7/8
B(b)	Depth	1121 / 44 1/8
C	Height	1570 / 61 13/16
D		595 / 23 7/16
E		534 / 21
F		1273 / 50 1/8
G		116 / 4 9/16
H		433 / 17 1/16
I		373 / 14 11/16
J		333 / 13 1/8
K		74 / 2 15/16
L		529 / 20 13/16
M		1446 / 56 15/16
N		1366 / 53 3/4
O		122 / 4 13/16
P		206 / 8 1/8
1	Operating panel	6 Drain valve
2	Door opening ø 535 mm / 21 1/16 inch	7 Liquid detergent supply
3	Detergent box	8 Electrical connection
4	Cold water	9 Steam connection
5	Hot water	

* Sound power levels measured according to ISO 60704.

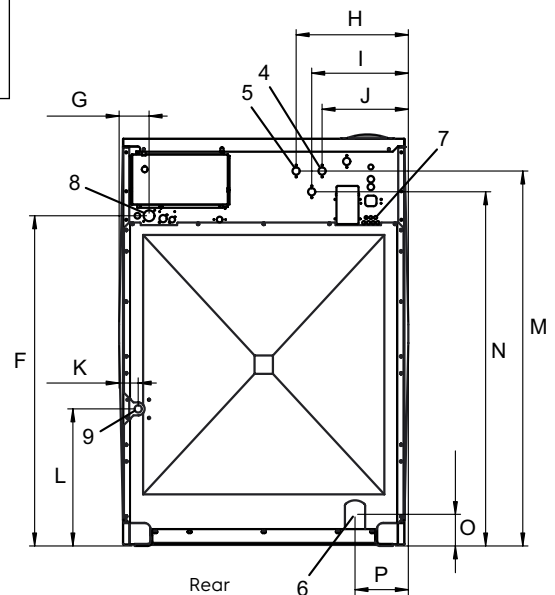
** Average data. Crated weight/shipping volume depends on configuration. Please contact logistics for exact measures.



Front



Side view



Rear